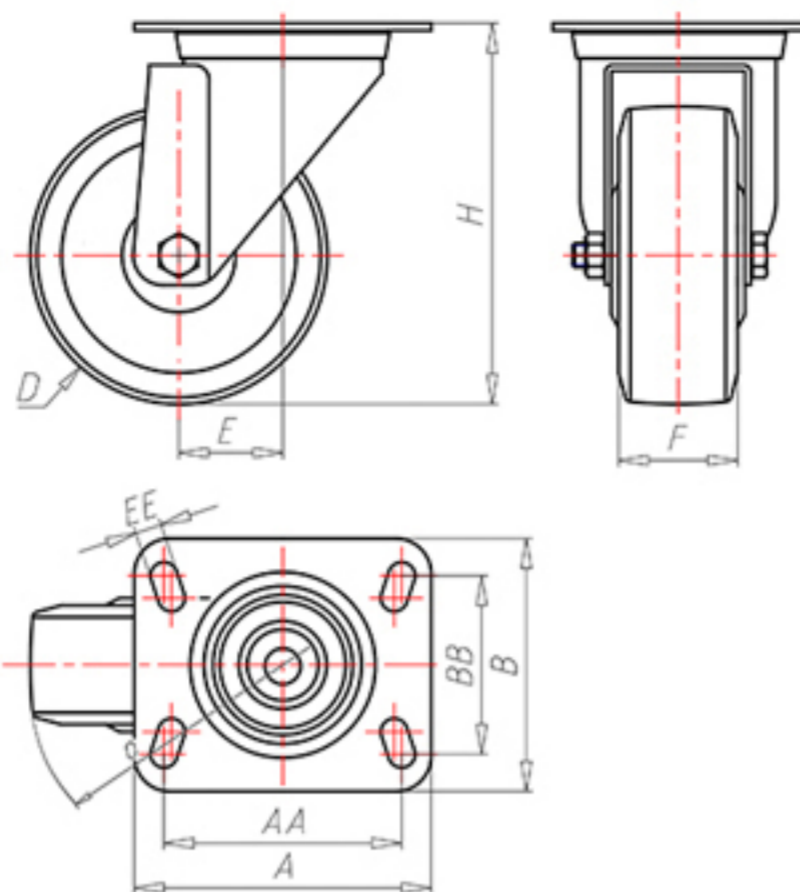


D-NAMIC

92 Shore A
+90°C
-40°C

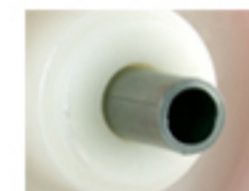


	D	80
	F	33
	H	108
	AxB	100x85
	AAxBB	80x60
	EE	9
	E	40
	O	82
	LC	200



Code for plain bore wheel

XNGZ8040



Code for wheel with roller bearing

XNGZ8040R



Code for wheel with double sealed ball bearing

XNGZ8040C



Code for wheel with double sealed Inox ball bearing

-

